

ACCREDITED CERTIFICATION

Accreditation ensures consistent training and testing of the firefighters and emergency responders who protect the citizens of the Commonwealth. Kentucky utilizes the International Fire Service Accreditation Congress as their accrediting entity.



Who is eligible to receive accredited firefighter certification in Kentucky?

In Kentucky, accredited certification is offered to:

- An active member of a Kentucky fire department
- A soldier or civilian assigned to a Kentucky military installation
- A currently enrolled student of Fire Safety/Science within the Kentucky Community and Technical College System or a 4-year Kentucky university.
- ****Non-firefighters associated with a fire response agency or fire brigade/safety team within Kentucky may be certified to the Hazardous Materials standard only****

How does a firefighter receive an IFSAC-accredited certification?

Candidates must complete both a written and skill competency evaluation. Written exams are available through each State Fire Rescue Training office, and may also be arranged by the lead instructor of class-based certification, such as Level 1 Fire Instructor.

I have obtained accredited certification in another state - how do I transfer this certification to Kentucky?

An active Kentucky firefighter with IFSAC or Pro-Board credentials issued outside Kentucky may request to have those certifications recognized in Kentucky through reciprocity. Reciprocity will be considered on a case-by-case basis.

Reciprocity candidates must possess both a Kentucky firefighter number and be an active member on the roster of a Kentucky fire department in order to apply for reciprocity.

Kentucky IFSAC Certification Levels

- Airport Firefighter
- Common Passenger Vehicle Awareness
- Common Passenger Vehicle Operations
- Common Passenger Vehicle Technician
- Driver Operator Aerial
- Driver Operator Mobile Water Supply
- Driver Operator Pumper
- Firefighter I
- Firefighter II
- Fire Inspector I
- Fire Instructor I
- Fire Instructor II
- Fire Officer I
- Fire Officer II
- Fire Officer III
- Fire Officer IV
- Hazmat Awareness
- Hazmat Operations
- Live Fire Instructor
- Live Fire Instructor-In-Charge
- Rope Rescue Awareness
- Rope Rescue Operations
- Rope Rescue Technician
- Small Unmanned Aircraft Systems

For more information, visit the **Kentucky Accredited Firefighter Certification Program** website via kyffcert.com

CPAT

The Candidate Physical Ability Test (CPAT) was developed to allow fire departments to obtain pools of trainable candidates who are physically able to perform essential job tasks at fire scenes.



FIRE COMMISSION
STATE FIRE RESCUE TRAINING



What is CPAT?

CPAT is an extremely demanding process to test the strength, agility, balance and ability to follow directions while under physical and emotional stress. The goal of this pass/fail test is to develop a fair and valid evaluation tool in the selection of firefighters to ensure that all firefighter candidates possess the physical ability to complete critical tasks effectively and safely.

Who should participate in CPAT?

All paid firefighters in the Commonwealth of Kentucky must provide proof of successful completion of a CPAT test as of their initial hiring date. Firefighters currently engaged in a full-time paid firefighter position, administrative-level only firefighters, or firefighters who have been engaged in a full-time paid firefighting position in the previous 365 days may be exempt from testing for lateral transfer to another full-time position on a different department or hiring as a full-time paid firefighter.

Authority Having Jurisdictions may still require CPAT as part of their hiring process for anyone who may be exempt.

Where is CPAT testing held?

CPAT sessions are conducted throughout the year at locations across the Commonwealth. Full sessions include orientation, two practice sessions and one session dedicated to administration of the CPAT.

Single-day sessions include orientation and a walk-through of the test, but do not allow for any event practice.

How can someone prove they have passed CPAT?

Candidates who have successfully passed CPAT will be issued a photo identification card. Cards issued to persons passing CPAT expire 12 months from the date the card was issued.

What does CPAT consist of?

CPAT consists of a series of 8 separate events requiring the candidate to progress along a predetermined path in a continuous manner:

- Stair climb
- Hose Drag
- Equipment Carry
- Ladder Raise & Extension
- Forcible Entry
- Search
- Rescue
- Ceiling Breach & Pull



For more information, visit the **Fire Commission Programs** page via kyfirecommission.kctcs.edu and then select the link to **CPAT** on the left-hand side of the page

FIRE SCIENCE TECHNOLOGY DEGREE PROGRAM

Fire science credentials are great for persons looking to advance their careers in the fire-fighting or emergency services fields.



Why should I pursue a degree in Fire Science?

An Associate of Applied Science in Fire Science is an ideal program for students interested in entering the public sector and also a great way to further a career, especially if you are looking to have a role in management.

Do I have to be on a fire department or have experience to enroll in the degree program?

Firefighting experience is not required to enroll in this program, though many students are members of a fire department.

Will I earn a Basic 1 or Basic 2 firefighter certificate in the degree program?

Students will receive state training hours in certification categories for coursework they complete, and may also apply IFSAC Accredited Firefighter I and II toward these state certifications. However, certification based solely on degree program coursework cannot be guaranteed.

Most degree students achieve state certification during their degree program studies or shortly thereafter. A number of variables apply, including attendance, electives, and if the student is already a member of a fire department participating in training.

Can fire industry certification or training hours I have previously taken be converted to college credit?

Certain IFSAC Accredited Certifications, such as Firefighter I, Firefighter II, Hazmat Awareness and Hazmat Operations can be applied as credit by exam and will count in place of a substantial amount of the technical coursework. Contact your local State Fire Rescue Training Coordinator/Degree Program Advisor for more information on the process and which certifications may be considered for credit by exam.

Is this program available online?

General education courses and electives numbered FIR 260 or higher are typically available in this format. Other technical courses may be offered in an online or hybrid format.

KCTCS Fire-Rescue Science Courses Offered At:

- Bluegrass CTC
- Elizabethtown CTC
- Gateway CTC
- Jefferson CTC
- Madisonville CTC
- Owensboro CTC
- Southcentral KY CTC
- Somerset CTC
- West KY CTC

Academic certificates are also available for Emergency Medical Responder, Emergency Medical Technician, Basic Fire Protection, Basic Firefighter, Advanced Firefighter, Hazardous Materials Technician and Fire Service Administration. A Fire Chief diploma is offered as well.

For more information, visit the **State Fire Rescue Training** page via kyfirecommission.kctcs.edu and then select the link to **Fire Science Technology Degree Program** on the left-hand side of the page

EMERGENCY MEDICAL SERVICES

State Fire Rescue Training (SFRT) is the largest provider of Emergency Medical Services (EMS) training in the Commonwealth.



How do I obtain EMS training?

Each of the 12 SFRT district offices deliver classes for blood-borne pathogens, CPR/AED, First Aid and are licensed to deliver initial EMS certification courses at the EMR and EMT level. Paramedic level courses are available through select SFRT districts the Commonwealth.

Continuing education for EMS is available through select district offices, select regional and state fire schools, and through SFRT Virtual Training courses.

How long does it take to complete an EMT or Paramedic program?

The EMT-Basic program takes just 15 weeks to complete, while the EMT-Advanced requires on average 200 clock hours to complete. The Paramedic program will take 12 months to complete. Paramedic program students must be a certified EMT-Basic by the first day Paramedic classes start.

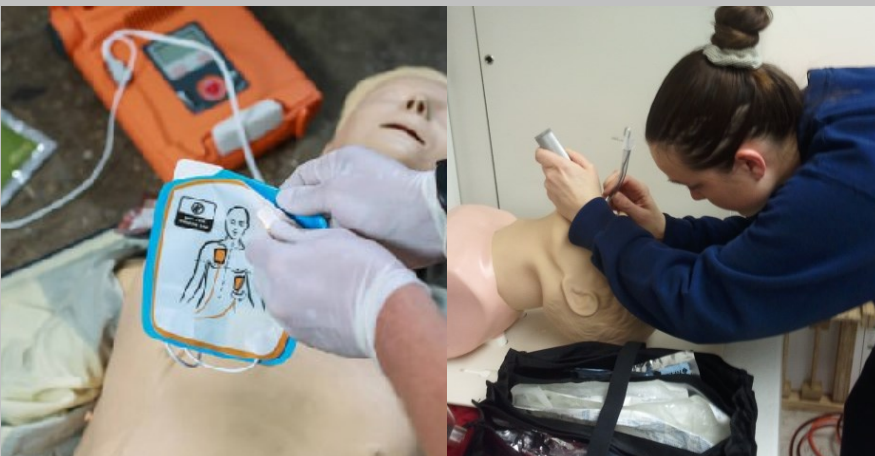
Will I be able to work after successfully completing the course?

Successful completion of an EMS course will allow you to sit for certification exams which will allow you to apply for state licensure through the Kentucky Board of EMS per their regulations; these certifications will be needed for employment as an EMR, EMT or Paramedic.

What types of EMS training are available through SFRT?

- Bloodborne Pathogens
- CPR/AED
- First Aid
- Individual EMS category courses
- Emergency Medical Responder*
- Emergency Medical Technician - Basic*
- Emergency Medical Technician - Advanced*
- Paramedic*

**College-level credentials available for these courses*



For more information, visit the **State Fire Rescue Training** page via kyfirecommission.kctcs.edu and then open the accordion link to **Emergency Medical Services Training** on the bottom of the page

ESTABLISHING A FIRE DEPARTMENT

A new fire department may be established pursuant to Kentucky laws. The Kentucky Fire Commission office processes all requests for establishing new fire departments.



What is required to establish a new volunteer fire department in Kentucky?

- A minimum of 12 members plus 1 chief that are not on any other fire departments
- At least 1 operational fire apparatus or 1 on order
- A fire station
- Fewer than 50% of the firefighters being full-time paid firefighters; any paid part-time firefighter must make less than \$8,000 per year

What is required to establish a new paid fire department in Kentucky?

- At least 50% of the firefighters must be full-time paid firefighters
- Full-time paid firefighters must earn at least \$8,000 per year
- Full-time paid firefighters must work a minimum of 2,080 hours annually
- Combination fire departments are eligible to receive State Aid, however, the department must have 51% or more firefighters on volunteer status

How is a new fire department established with the Fire Commission?

Application packets can be found on the Fire Commission website.



When would a new fire department be established?

New fire departments in Kentucky can be established for a number of reasons:

- Merger of 2 or more currently existing departments
- Restructuring of an existing department
- Create service for an area in need

For more information, visit the **Fire Commission Programs** page via kyfirecommission.kctcs.edu and then select the link to **Establishing A Fire Department** on the left-hand side of the page

KENTUCKY FIREFIGHTER CERTIFICATION

Programs such as State Aid, Grants and Incentive & Pension are dependent on departments having members certified to the appropriate level.



How long does a firefighter have to become certified?

Volunteer firefighters must obtain Basic 1 certification (115-hours) within two years of their start date.

Paid firefighters have one year from their start date to obtain Basic 2 (300-hours) certification.

Note that Basic 2 certification requires full participation and completion of hands-on skills components for Firefighter Survival, Firefighter Rescue and Flashover Awareness

How is a firefighter issued certification?

Once a firefighter completes all mandatory training for the indicated certification, an authorized fire department user must request firefighter certification through the Kentucky Fire Information and Records Entry System (KyFIREs) portal. Only authorized departmental users (those who have ability to enter training and personnel records) are permitted to create and submit applications for Basic 1 or Basic 2 certification.

Certifications are issued in the applicant's KyFIREs portal for download or printing.

Applying for Basic 1 or Basic 2 Certification

- 1) In the Application section of the firefighter's KyFIREs portal, select "Request Certification"
- 2) Select certification level from drop down menu
- 3) Leave the issue date as the current date and select Continue
- 4) Verify Recipient Information and select Continue
- 5) Review Guidelines for Issuance and select Continue
- 6) On the Affirmation page, select **Finish Later**; a progress bar will appear under the Application section of the applicant's KyFIREs portal

After all requirements have been fulfilled, the application may be submitted for review.

For more information, visit the **Fire Commission Programs** page via kyfirecommission.kctcs.edu and then select the link to **Firefighter Certification** on the left-hand side of the page



HEALTH & WELLNESS

Firefighting is dangerous, stressful and physically demanding. The Kentucky Fire Commission is dedicated to helping firefighters make their health and wellness a priority in order to reduce firefighter deaths by cardiac-related events.



Do firefighters have to pass a physical agility test to become a firefighters?

By Kentucky law, newly-hired paid firefighters are required to present proof of successful completion of the Candidate Physical Ability Test (CPAT). Select exemptions apply. Authority Having Jurisdictions may also require physical agility testing as part of their hiring process for anyone who may be exempt from CPAT.

How can the Fire Commission assist with a departmental fitness program?

The Fire Commission offers a grant-funded program for purchase of health and wellness equipment for departments.

How can firefighters better prevent cancer?

State Fire Rescue Training (SFRT) provides Cancer Awareness & Prevention courses to allow for better understanding of the link between firefighting and cancer.

To assist with removal of carcinogens from turnout gear, the Fire Commission offers annually a grant for the purchase of Gear Extractors for a select number of qualifying departments.

Are there programs to help manage job-related stress?

Through the In Line of Duty Stress Injury Reimbursement Program, the Fire Commission has established funds to reimburse paid and volunteer firefighters for out-of-pocket expenses they have incurred after being diagnosed with post-traumatic stress disorder for firefighting related experiences.

SFRT offers a "Silent Mayday" class that assists firefighters and their families to understand, identify, prevent and limit effects of PTSD.

Why is improving the health and wellness of firefighters important?

Firefighters today face a number of potential health issues. A formal health and wellness program can assist departments in taking measures to combat these health issues and create a healthier culture in the fire service, while decreasing the potential for costly and debilitating illnesses in the future.

Fitness training benefits at many levels—from a firefighter's personal health and well-being, to the effectiveness of the department working together on an incident scene, and to help the fire department to better meet the needs of the community they serve.

For more information, visit the **Fire Commission Programs** page via kyfirecommission.kctcs.edu and then select the link to **Health & Wellness** on the left-hand side of the page

HEPATITIS VACCINATIONS

The Hepatitis vaccination program is a voluntary service that is available to every eligible firefighter throughout the state of Kentucky free of charge to the firefighter.



If the firefighter or fire department does not have to pay for these vaccines, who does?

The Kentucky Fire Commission has an agreement with the Department of Public Health whereby local health departments who administer Hepatitis A & B vaccines to firefighters will purchase these vaccines and bill the Fire Commission directly for the purchased cost plus an administration fee.

Who is eligible for the hepatitis vaccine program?

A firefighter must be active on a department roster on the date the vaccine is provided in order for the Fire Commission to make payment to the health department.

Is there any paperwork I have to bring to the health department?

A current year Fire Commission Hepatitis A & B Voucher must accompany the firefighter receiving the vaccination at the time of the vaccination. A copy of the current voucher can be downloaded from the Fire Commission website via the Hepatitis Vaccine program page.



Steps to Receive Hepatitis A & B Vaccine

- 1) Firefighter must be active on a department roster
- 2) Obtain a current Hepatitis A & B Vaccination Voucher from your fire department, signed by the Chief, before going to the health department
- 3) Fill out the Fire Department section of the voucher
- 4) Present the voucher to the health department. They will fill out their portion and submit for reimbursement.

***Note: The Hepatitis A & B Voucher must be presented to the health department prior to each dose of vaccine (there will be 3). If the voucher is not presented, the fire department will be responsible for payment of the vaccine.*

For more information, visit the **Fire Commission Programs** page via kyfirecommission.kctcs.edu and then select the link to **Hepatitis Vaccines** on the left-hand side of the page

INCENTIVE & PENSION

Eligible local governments are entitled to receive annually a supplement for each qualified career firefighters it employs, plus an amount equal to the required employer contribution on the supplement to the defined benefit pension plan, or to a plan qualified under Section 401(1) or Section 457 of the Internal Revenue Code of 1954 as amended.



FIRE COMMISSION
STATE FIRE RESCUE TRAINING



What is the annual allotment for firefighters receiving Incentive pay?

An eligible firefighter receives \$4,429 per year/\$369.08 per month/\$12.30 per day plus an equal amount to the employer's contribution supplement to the defined benefit pension plan.

How do firefighters become eligible for Incentive & Pension program pay?

A firefighter must have at minimum a Kentucky Basic 2/300-hour firefighter certification, work at least 2,080 hours, earn at least \$8,000 annually and provide proof of passing Candidate Physical Ability Testing when hired or by other qualifying circumstances.

IFSAC Firefighter II credentialing is not required to receive Incentive Pay, however, a firefighter that is not Basic 2/300-hour certified, but is credentialed to IFSAC Firefighter II and all other select hours can receive Incentive Pay, provided the firefighter obtains a Basic 2/300-hour certification within one year of hiring date.

Firefighters must also complete 100 hours of training annually to maintain eligibility for the program.

What happens if a firefighter is called to active military duty or has time off due to an illness or injury?

Firefighters called to active military duty for longer than 6 months will have Incentive Pay stop until they return; for activations less than 6 months, Incentive Pay will continue.

Firefighters on leave due to allowable medical conditions will have the same amount of time off to make up training hours until the following year.

How does a department request Incentive & Pension Pay?

- Requests for funds must be submitted by the 5th of the month for which the department is requesting funds
- A list of eligible firefighters must accompany the request each month
- Departments have 30 days to notify the Fire Commission office, in writing, about a newly eligible certified firefighter
- Departments must submit Quarterly Reports and Rosters at the end of each quarter
- Departments who wish to become part of the Incentive & Pension program must submit an Application for Incentive Pay to the Fire Commission office between February 1st and April 30th

For more information, visit the **Fire Commission Programs** page via kyfirecommission.kctcs.edu and then select the link to **Incentive & Pension** on the left-hand side of the page

INDUSTRIAL TRAINING

State Fire Rescue Training (SFRT) offers many classes that help businesses, industries, and governmental agencies meet regulatory requirements to provide a safe and healthy workplace.



What industries does SFRT provide training to?

Individuals, small businesses, major corporations, government entities in the Commonwealth of Kentucky and the surrounding region.

What type of training does SFRT offer to industry?

SFRT offers a wide range of training courses that can be tailored to suit the needs of individual clients. SFRT has expertise and curricula in courses related to CPR/AED, First Aid, OSHA regulations, and NFPA standards.

Where is industrial training conducted?

With one of the largest mobile fleets of training props in the nation, SFRT has the ability to customize full, hands-on training at your location.

Who do I contact to discuss industrial training?

Contact the SFRT district office that is local to your county.



For more information, visit the **State Fire Rescue Training** page via kyfirecommission.kctcs.edu and then open the accordion link to **Business, Industry, & Government Training** on the bottom of the page

What areas of training are offered for Business & Industry?

- Industrial Firefighting
- Rescue
- Safety
- Rope Rescue
- Confined Space
- Medical
- Hazardous Materials
- Incident Command System

Custom programs are available. Please contact the SFRT district office serving your locality.



JUNIOR FIREFIGHTER PROGRAM

Junior Firefighter (JRFF) Programs allow youth the opportunity to learn about fire and emergency services organizations in a safe, supervised, controlled, educational and fun manner.



Who can be a junior firefighter in Kentucky?

Any youth ages 15-17 who are part of a departmental program recognized by the Kentucky Fire Commission. This is mandated in Workers Compensation regulations that cover the JRFF program.

Do I have to have good grades to be a JRFF?

Yes. JRFFs must be a high school graduate (or equivalent) or enrolled in a public, private or home school in good standing, meeting attendance regulations as set forth by federal, state or local authorities and maintain a grade average of the letter "C".

Can JRFFs respond to emergency runs?

After completing a minimum of 30 training hours in categories designated by the Fire Commission, JRFFs may ride in apparatus and respond to runs in accordance with each fire department's SOP and local, state and federal traffic laws.

JRFFs are prohibited from responding in a privately owned vehicle (POV) to any incident scene, and are disallowed from installing or operating a POV with any type of emergency warning device while responding to any incident and/or have these warning devices installed in their POV.

Can JRFFs assist with fire suppression on scene?

No. A JRFF cannot enter any environment that is considered an immediate danger to life and health (IDLH). JRFFs on an incident scene may assist with several operations outlined in the JRFF Program Guidelines document.

Participation in select training activities where live fire is involved utilizing training props is allowed per Kentucky Fire Commission guidelines.

How can my department start a Junior Firefighter Program?

- Departments must be recognized, approved and registered with the Fire Commission
- Departments must implement a procedure that clearly defines program responsibilities and operations and is not inconsistent with any of Commission determined requirements for a JRFF program
- Complete and submit a Program Notification Form to the Fire Commission office
- Maintain all required program documentation on file (in main fire station) for review
- The program must follow approved program guidelines as established by the Fire Commission

For more information, visit the **Fire Commission Programs** page via kyfirecommission.kctcs.edu and then select the link to **Junior Firefighters** on the left-hand side of the page



LINE-OF-DUTY STRESS INJURY FUNDING & REIMBURSEMENT

Firefighters have long been about helping others; these days more than ever, that includes fellow firefighters. The Kentucky Fire Commission is proud to offer a policy for line-of-duty stress injury treatment reimbursement.

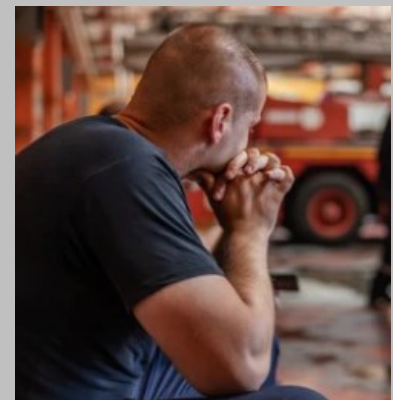


FIRE COMMISSION
STATE FIRE RESCUE TRAINING



What reimbursements are covered?

- Initial diagnosis
- Counseling or therapy
- Medication
- Mental health facility expenses
- In-patient treatment
- Out-patient treatment



What is the Line-of-Duty Stress Injury Funding & Reimbursement Program?

This program establishes funds for reimbursement of out-of-pocket expenses that a firefighter has incurred after being diagnosed with line-of-duty stress injuries through firefighting related experiences.

Who is eligible to receive reimbursement under this program?

Current volunteer and full-time paid firefighters, or persons who were a volunteer or full-time paid firefighter in the Commonwealth of Kentucky that meet eligibility requirements as set forth in the policy, and have submitted a completed eligibility packet to the Fire Commission office.

Is there a maximum amount of reimbursement?

Each qualifying individual may receive reimbursement benefits up to \$50,000. Requests for additional benefits may be submitted to the Kentucky Fire Commission for review.

No one should suffer with line-of-duty stress injuries on their own. If you are a firefighter struggling with this, or you know one who is, please seek help from a licensed mental health professional.

For more information, visit the **Fire Commission Programs** page via kyfirecommission.kctcs.edu and then select the link to **Stress Injury Treatment Reimbursement** on the left-hand side of the page

LOW INTEREST LOANS

The low interest loan program is available for any volunteer fire department that meets training requirements and is in good standing to receive State Aid as per KRS 95A.



FIRE COMMISSION
STATE FIRE RESCUE TRAINING



What are the financial stipulations of the Low Interest Loan program?

A maximum of \$125,000 in funds may be borrowed for up to a 15-year term and at an interest rate of 3%.

What can be purchased with loan monies?

Apparatus, communications equipment, accessory equipment, protective equipment, construction of new facilities or modernization of existing facilities, and repair or rehabilitation of apparatus. All equipment purchased must meet NFPA standards that were current at the time it was manufactured.

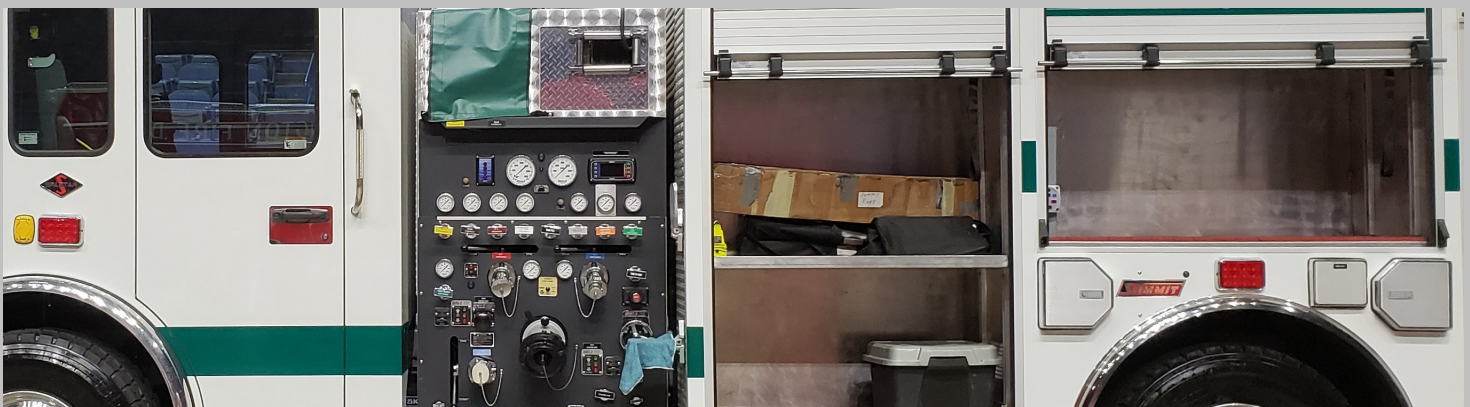
What cannot be purchased with loan monies?

Investments, operating expenses, to reduce debt or other obligations prior to Loan Commitment letter, or payment of fees for designing or planning of facilities or preparation of application.

How does a department become eligible to apply for a Low Interest Loan?

- Fire departments must be of volunteer status
- Fire departments must have received State Aid for the past three consecutive years
- Fire departments cannot obtain a loan from a conventional financial institution at the rate of 3% per annum
- Fire departments must agree to maintain State Aid qualifications and obligate the total annual amount of their department's State Aid as payment, or an amount less than their yearly allotment as determined by an amortization schedule.

For more information, visit the **Fire Commission Programs** page via kyfirecommission.kctcs.edu and then select the link to **Low Interest Loans** on the left-hand side of the page



LINE-OF-DUTY BENEFITS

The Fire Commission offers select assistance benefits to eligible firefighters who have become permanently and totally disabled, and to family members of a firefighter who has lost their life as a direct result of an act in the line of duty.



What benefits are offered to firefighters who have become disabled in the line of duty.

Kentucky firefighters who have become permanently and totally disabled may be eligible for funds to help defray the cost of both life and health insurance.

The spouse and any child of a permanently and totally disabled volunteer firefighter injured while in active service or in training for active service may be eligible for free tuition at a state supported university, community college or vocational training institution for up to 36 months in order to obtain a diploma.

What benefits are offered to firefighters who have lost their life in the line of duty?

A lump sum payment of \$80,000 is paid to eligible dependents.

Spouses and children of firefighters who died as a result of a line of duty injury may be eligible for free tuition at a state supported university, community or vocational training institution.



For more information, visit the **Fire Commission Programs** page via kyfirecommission.kctcs.edu and then select the link to **Line-Of-Duty-Benefits** on the left-hand side of the page

Kentucky Fallen Firefighter Memorial

The Kentucky Fallen Firefighter Memorial is a tangible tribute to those individuals who have made the ultimate sacrifice in the line of duty.

A memorial service is held each fall in remembrance.

Over 300 names have been inscribed on the walls adjoining the 19' obelisk as a recollection of the sacrifices these men and women have made.

The memorial is located in Frankfort at Juniper Hill Park, just off the entrance on US 60.



NFIRS

The National Fire Incident Reporting System (NFIRS) is an online reporting system used to track fire incident reports. This system gathers and analyzes information on the magnitude of the nation's fire incidents, as well as its detailed characteristics and trends.



Why should my department report with NFIRS?

Qualifying fire departments reporting on the National Fire Incident Reporting System (NFIRS) will receive an additional \$500 along with the \$14,500 in State Aid Funds for a total of \$15,000 per year.

FEMA requires fire departments to report to NFIRS to receive grants from them. Learn more at fema.gov/grants.

What is done with data entered into NFIRS?

This database is used to answer questions about the nature and causes of injuries, deaths and property loss resulting from fires, and can be shared with other organizations.

Who benefits from the data reported to NFIRS?

Federal, state and local governments can develop fire reporting and analysis capability for their own use. Fire departments can benefit through FEMA grants by reporting data to NFIRS.

How do I obtain a User ID or get a password reset for my department?

The NFIRS website has a link for registration and password resets on their login page:

www.nfirs.fema.gov/NFIRSWeb/login.



Facts about NFIRS:

- NFIRS represents the world's largest, national, annual database of fire incident information
- State participation in NFIRS is voluntary
- 50 states and the District of Columbia report NFIRS data
- 37 fire departments having a protected population of over 500,000 participate in NFIRS
- Over 24,000 fire departments report in NFIRS each year
- Participating departments report an average of 23 million incidents each year
- Participating departments report an average of one million fires each year
- The NFIRS database comprises roughly 75% of all reported fires that occur annually

For more information, visit the **Fire Commission Programs** page via kyfirecommission.kctcs.edu and then select the link to **NFIRS** on the left-hand side of the page

OUT-OF-STATE FIREFIGHTERS

Kentucky firefighters who have previously been a member of a fire department in a different state may be eligible for transfer of select training hours toward Kentucky certification.



Can firefighter training hours transfer to Kentucky from another state?

Transfer of training hours for certification will be reviewed by the Kentucky Fire Commission on a case-by-base basis. For hours to be considered for transfer, the firefighter must be an active member on the roster of a Kentucky fire department.

Will all of my training hours transfer to Kentucky?

Select training hours in out-of-state courses equivalent to Kentucky courses are eligible for conversion of hours from the issuing state to Kentucky. ****Not all training hours will directly transfer to a Kentucky firefighter training category.****

Credit for elective hours will be issued for training not eligible for conversion.

In addition, all firefighters certified in Kentucky must also complete the following courses, delivered by an active State Fire Rescue Training instructor of record, to attain certification at the Basic 1 or Basic 2 level:

- Kentucky Firefighter Survival
- Kentucky Firefighter Rescue
- Kentucky Flashover Recognition & Survival
- Kentucky Wildland Awareness

If I was fully certified at the state level elsewhere, will I automatically be fully certified in Kentucky?

Kentucky firefighters holding accredited certifications from another state, issued by IFSAC or ProBoard, are eligible to apply for reciprocity for these certifications.

Certifications at the state level will not transfer to Kentucky; the individual must request a conversion of out-of-state training hours from the Kentucky Fire Commission. Firefighters wishing to be certified in Kentucky must satisfy all Kentucky certification requirements.

To download an Out of State Transfer form, visit the **Fire Commission Forms** page via kyfirecommission.kctcs.edu and select the link to **Out-of-State Transfers**

Applying For Accredited Certification Reciprocity

- 1) Be an active member of a Kentucky Fire Department and assigned a Kentucky firefighter number
- 2) File an Application for Accredited Certification Reciprocity via kyffcert.com
- 3) Multiple levels may be submitted on the same application

Request a Conversion of Out-of-State Training Hours

- 1) Be an active member of a Kentucky fire department, and assigned a Kentucky firefighter number
- 2) Apply for Accredited Certification Reciprocity, if applicable
- 3) After receipt of Kentucky Reciprocity IFSAC certificates, the firefighter's previous agency (fire department or state) must complete and submit the Out of State Transfer Form

PEER SUPPORT TRAINING

Peer support training equips individuals with skills and knowledge to support those who are facing challenges in mental health. The Fire Commission is proud to offer this training, led by the International Association of Firefighters (IAFF), twice each year.



Why should I participate in Peer Support Training?

First responders face numerous stressors which can have a cumulative impact on mental health and well-being. Peer support recognizes these stressors and risks and provides a lifeline to those navigating the complexities of being a first responder.

Who can participate in this training?

Firefighters, EMS providers, dispatchers, chaplains, retirees, behavioral health specialists and anyone interested in supporting firefighters during tough times is welcome to attend.

Do I have to be a member of the IAFF to attend?

No. This class is open to anyone. Participants who are not affiliated with an IAFF fire department will have to create an account on the IAFF registration website.

No one should suffer with mental health issues on their own. If you are a firefighter struggling with this, or you know one who is, please seek help from a licensed mental health professional.

For more information, visit the **Fire Commission Programs** page via kyfirecommission.kctcs.edu and then select the link to **Peer Support Training** on the left-hand side of the page

Participants in Peer Support Training learn to:

- Develop Peer Teams for their fire department
- Approach a firefighter of concern
- Establish trust and confidentiality
- Determine whether a crisis is developing
- Refer the person to available resources



STATE AID

The State Aid program disburses \$15,000** per year to all qualifying volunteer fire departments in the Commonwealth of Kentucky.



FIRE COMMISSION
STATE FIRE RESCUE TRAINING



What constitutes a qualifying fire department?

A department must be a recognized volunteer department, shall include at least 12 firefighters, 1 chief and at least 1 operational fire apparatus or 1 fire apparatus on order. In addition, 50% of the department's firefighters shall have completed at least 57.5 hours toward the 115 hours required for Basic 1 certification within the first six months of the first year of the department's application for certification, and there shall be a plan to complete the Basic 1 certification within the 2nd year.

How does my department receive State Aid?

Departments must submit a Proof of Purchase form and supporting documentation each year detailing how their State Aid funds from the previous year have been allocated. Once this form has been reviewed and approved, State Aid funds for the current cycle will be issued.

Can State Aid funds be partially spent and the remainder saved for the next year?

All State Aid funds must either be used in full or saved in full each year. Carrying over a portion of State Aid funds for the next year is not allowed. State Aid allocation may be saved in full for a maximum of five years to be utilized towards large expenditures.

Saved State Aid Funds must be placed in a basic savings account, in the fire department or city's name, that is as low interest bearing as possible.

****Note that any qualifying department which fails to participate satisfactorily in the NFIRS (National Fire Incident Reporting System) shall forfeit \$500 of its allotment annually.****

For more information, visit the **Fire Commission Programs** page via kyfirecommission.kctcs.edu and then select the link to **State Aid** on the left-hand side of the page

What Can Be Purchased With State Aid Funds? *

- Recognized Fire Schools
- Apparatus Insurance
- Fire Stations
- Station Services
- Personal Protective Equipment
- Apparatus
- Firefighting Equipment
- Rescue Equipment
- Testing of Equipment
- Communications Equipment
- Basic EMS Equipment (for fire trucks only)
- Training Materials and Equipment

*A complete list can be found on the Fire Commission website on the State Aid program page or by contacting the Fire Commission office.

What Cannot Be Purchased With State Aid Funds?

- Routine Apparatus Maintenance
- Volunteer Firefighter Pay/Reimbursement
- Uniforms/Coveralls
- Non-NFPA Compliant Jackets/Vests
- Parking/Training Area Surface
- Food or Beverages

THERMAL IMAGING CAMERA GRANTS

A goal of the Kentucky Fire Commission is to ensure every fire department throughout the Commonwealth has at least one Thermal Imaging Camera (TIC) within their department.



FIRE COMMISSION
STATE FIRE RESCUE TRAINING



What are the eligibility requirements for a fire department to apply for a TIC grant?

Fire departments formed under KRS Chapters 65, 75, 95, or 273 are eligible to apply for this grant.

KRS 95A.440 requires a two-year non-eligibility period for past recipients of this grant. If a department was awarded the TIC Grant within the past two fiscal years, the department is not eligible to apply during the current year.

How does the TIC grant program selection process work?

Fire departments must be in good standing with the Kentucky Fire Commission to be eligible for this grant.

TIC Grants are awarded based upon a date stamp return of the application, the number of TIC's the department currently has, and the last date of receiving this award, if previously awarded.

How are the cameras purchased?

Departments awarded a TIC grant will purchase the TIC and will be reimbursed up to the dollar amount allotted by the Fire Commission.

Eligible Thermal Imaging Camera Manufacturers

- SEEK
- Bull ard
- Scott
- MSA
- FLIR
- Drager
- Avon
- ISG

For more information, visit the **Fire Commission Programs** page via kyfirecommission.kctcs.edu and then select the link to **Thermal Imaging Camera Grants** on the left-hand side of the page



TRAINING FACILITY GRANTS

The Kentucky Fire Commission at times has funds available for fire departments to apply for a grant intended for training facilities.



FIRE COMMISSION
STATE FIRE RESCUE TRAINING



Which fire departments are eligible to apply for this grant?

All fire departments in the Commonwealth of Kentucky that are in good standing with the Kentucky Fire Commission may apply for this grant.

Our department was awarded a Training Facility Grant for one project, but we changed our mind and would like to use the money for a different project. Is this allowed?

Changes to the original projects must be submitted in writing to the Fire Commission for approval. Grant applicants shall acknowledge that funds must be returned if they do not seek and obtain permission from the Commission to change their initial project.

How will the Fire Commission know what has been done with the Training Facility Grant funds?

Grant recipients must submit both quarterly progress reports and quarterly financial status reports (along with receipts and verification of payment) to the Fire Commission office until the entire grant has been expended. All projects must be completed within one year. Any funds unspent must be returned to the Fire Commission.



What can be purchased with Training Facility Grant funds?

- Construction of fixed structures utilized in the training process, including but not limited to:
 - Training towers
 - Burn/smoke buildings
 - Multi-purpose buildings
 - Training props
 - Dedicated buildings used for the purpose of training fire-fighters
- Upgrade of existing training facilities
- Equipment solely used for training purposes



For more information, visit the **Fire Commission Programs** page via kyfirecommission.kctcs.edu and then select the link to **Training Facility Grants** on the left-hand side of the page

TRAINING RECORDS

All fire departments recognized by the Kentucky Fire Commission are required to enter training hours for firefighters. Training for each firefighter is tracked and will be reflected on fire department records.



Why are firefighter training hours tracked by the Fire Commission?

Records are used to establish qualifications for individual firefighter certification. These records are also used to establish qualifications for departments participating in select programs offered by the Fire Commission, as well as to be a recognized fire department in the Commonwealth.

The Fire Commission utilizes the Kentucky Fire Information and Records Entry System (KyFIRES) for records management.

What levels of firefighter certification hours are available?

Kentucky certifies firefighters who have met training hours requirements in certain categories. There is a Basic 1 certification level (115 hours) for volunteer firefighters, and a Basic 2 certification level (300 hours) for paid firefighters.

Does a firefighter have to be certified?

Volunteer firefighters have two years from their start date to obtain a Basic 1 certification, while paid firefighters have one year from their start date to obtain Basic 2 certification. Programs such as State Aid, Grants, and Incentive & Pension are dependent on departments having members certified to the appropriate level.

How many hours of annual training must firefighters receive?

Volunteer firefighters must receive a minimum of 20 hours per year (July 1 of the current year, through June 30 of the following year), while paid firefighters must receive at least 100 hours per each calendar year.

How do firefighters obtain a copy of their certifications and training records?

KyFIRES allows for individual access to personal fire training records. Certifications attained by the firefighter may be printed via the KyFIRES platform, as well as a list of training hours on record. Contact the Fire Commission office to request individual account access.

I have completed all required training for certification - how do I receive a certificate?

Departments must create an Application for each certification level the firefighter is seeking.

Once the firefighter has fulfilled all requirements for certification, the fire department shall submit the request for certification within the Application section of the member's KyFIRES portal.

If certification has been attained, the firefighter will be issued the certificate in their KyFIRES portal and it will be available for the firefighter or department to print.

For more information, visit the [Fire Commission Programs](#) page via kyfirecommission.kctcs.edu and then select the link to [Training Records & KyFIRES](#) on the left-hand side of the page

WORKERS COMPENSATION

The Kentucky Workers' Compensation Program is designed to compensate employees for loss of earning power due to work-related injuries or illness arising out of, and in the course of, their employment.



How can Workers Compensation help me?

The Kentucky Workers Compensation Program provides medical and disability benefits to employees who may experience a work-related injury or illness, including volunteer firefighters and junior firefighters.

How does my department initiate a claim?

Contact Mary Adams in the Fire Commission office at (859) 256-3475 or mary.adams@kctcs.edu to start a claim. Once the claim has been submitted to the Workers Compensation office, the claimant will be assigned a caseworker. The claimant will work with their caseworker for the duration of their claim.

Do I have to file a claim right away?

The First Report of Injury form must be submitted by the supervisor (or designee) within three working days after the injury to meet the requirement of making the first payment to the employee. Failure to comply with this statute can result in a fine being levied up to \$1,000 for each occurrence.

I currently have a claim. Where do I have the medical bills sent to?

Employees who have a claim that has been set up will need to work with their case manager at the Workers Compensation administrator's office at (502) 564-6847 for all matters concerning billing and benefits. Medical bills should NOT be sent to the Fire Commission office.

For more information, visit the **Fire Commission Programs** page via kyfirecommission.kctcs.edu and then select the link to **Workers Compensation** on the left-hand side of the page

How does a claims process work?

- You will be assigned a claim representative to investigate and manage your claim
- Have the First Report of Injury Form completed by your supervisor and sign the Signature Page, Medical Waiver and Consent Form and the Designated Physician Form
- You will receive a temporary prescription card that will allow you to fill your prescriptions without any out-of-pocket expenses; take the Prescription Form with you to the pharmacy
- Select a physician from the list of pre-approved providers. You may change your "gatekeeper" physician only one time. Referrals to specialists are not considered a physician change. If you change your gatekeeper physician, you must complete and submit the 2nd Designated Physician Form.
- Always take the Report of Medical Status form with you to your doctor appointments and bring the completed form back to your agency
- To request reimbursement for out-of-pocket expenses related to your injury, use the reimbursement form and send to your claim representative